

Designer Features

5.02.06 Viewing SAP Pushbutton Properties

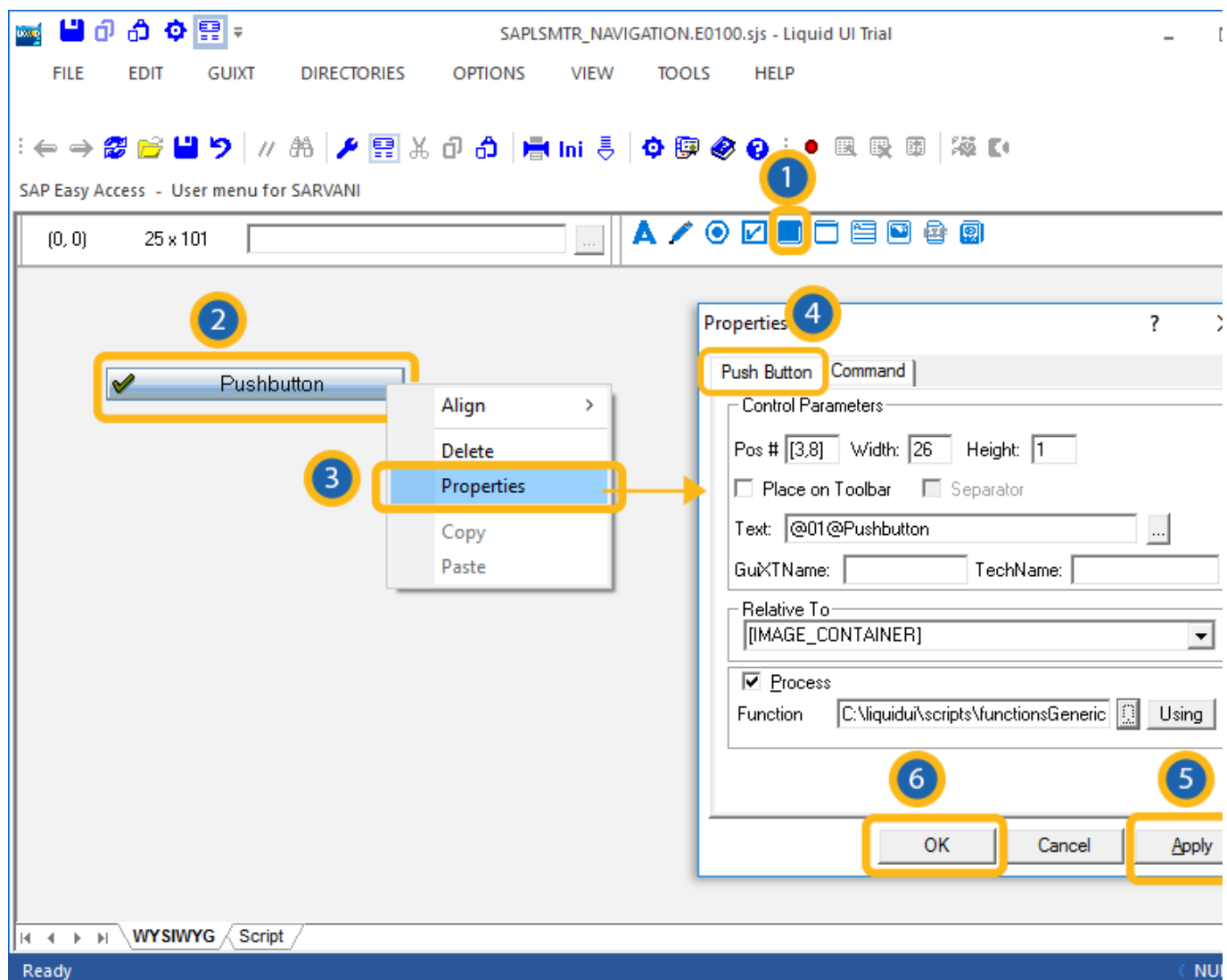
The properties dialog for the Pushbutton element contains two tabs, as follows:

- [Pushbutton](#)
- [Command](#)

You can modify the properties for the pushbutton element from this dialog box. The tabs are more fully explained below.

Pushbutton

The Pushbutton tab appears as shown below.



Designer Features

The available parameters are as follows.

Pos

Specifies the pushbutton's onscreen coordinates. This is a read-only field - it is not user-modifiable.

Width

Specifies the pushbutton's width in pixels. This is also a read-only field.

Height

Specifies the pushbutton's height in pixels. It is a read-only field.

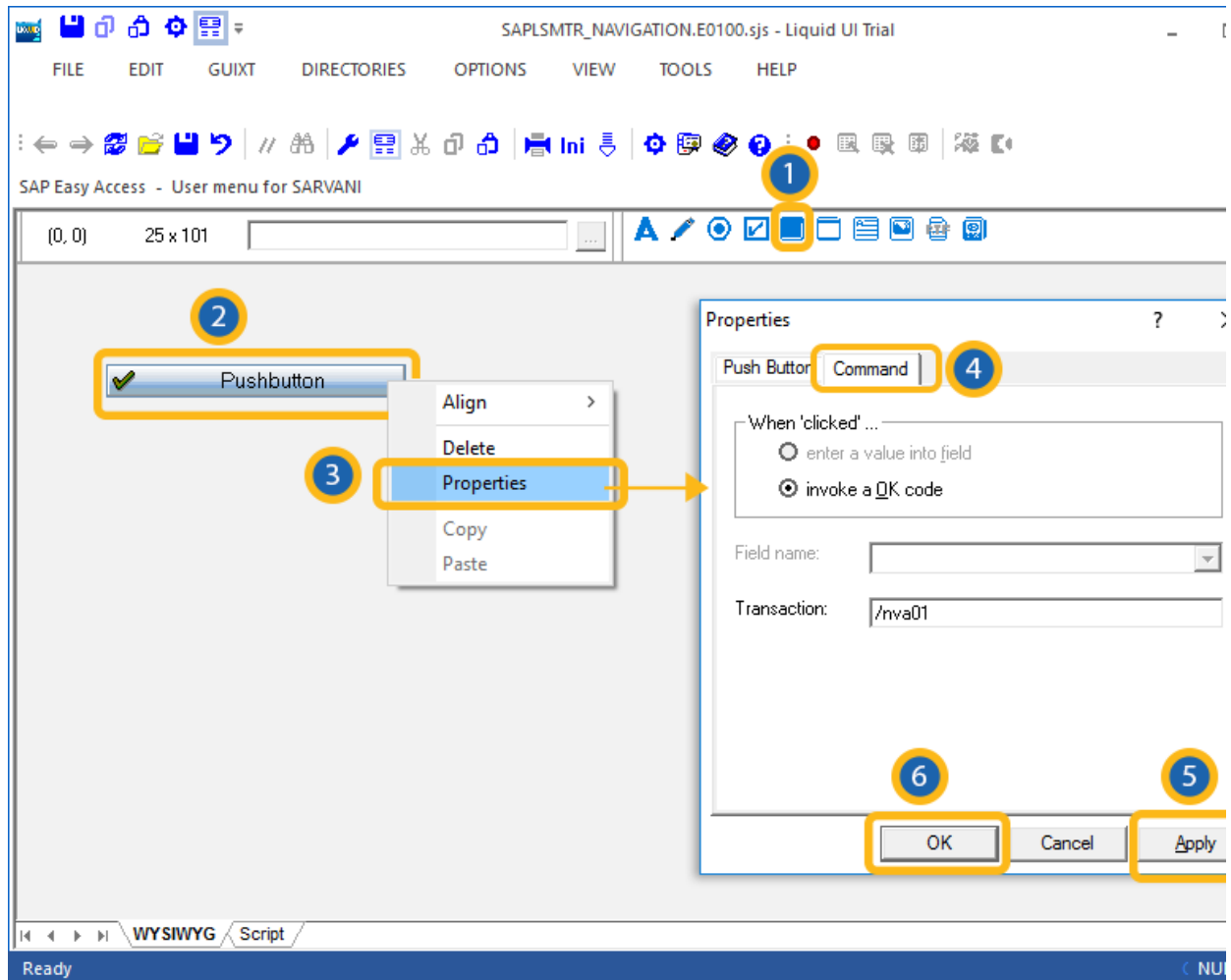
Place on Toolbar

Places the pushbutton on toolbar.

Command

The command tab appears as shown below.

Designer Features



The available parameters are as follows.

field

Specifies the pushbutton's onscreen coordinates. This is a read-only field - it is not user-modifiable.

Transaction field

Specifies the transaction field name. This is also a read-only field.

Designer Features

Unique solution ID: #1521

Author: Shilpa Sahu

Last update: 2019-08-06 06:26