

# Designer Installation

## 2.04 Designer Modification and Removal

In addition to installing Designer, the InstallShield Wizard can also be used to repair or remove Designer once it is installed. the available options are as follows.

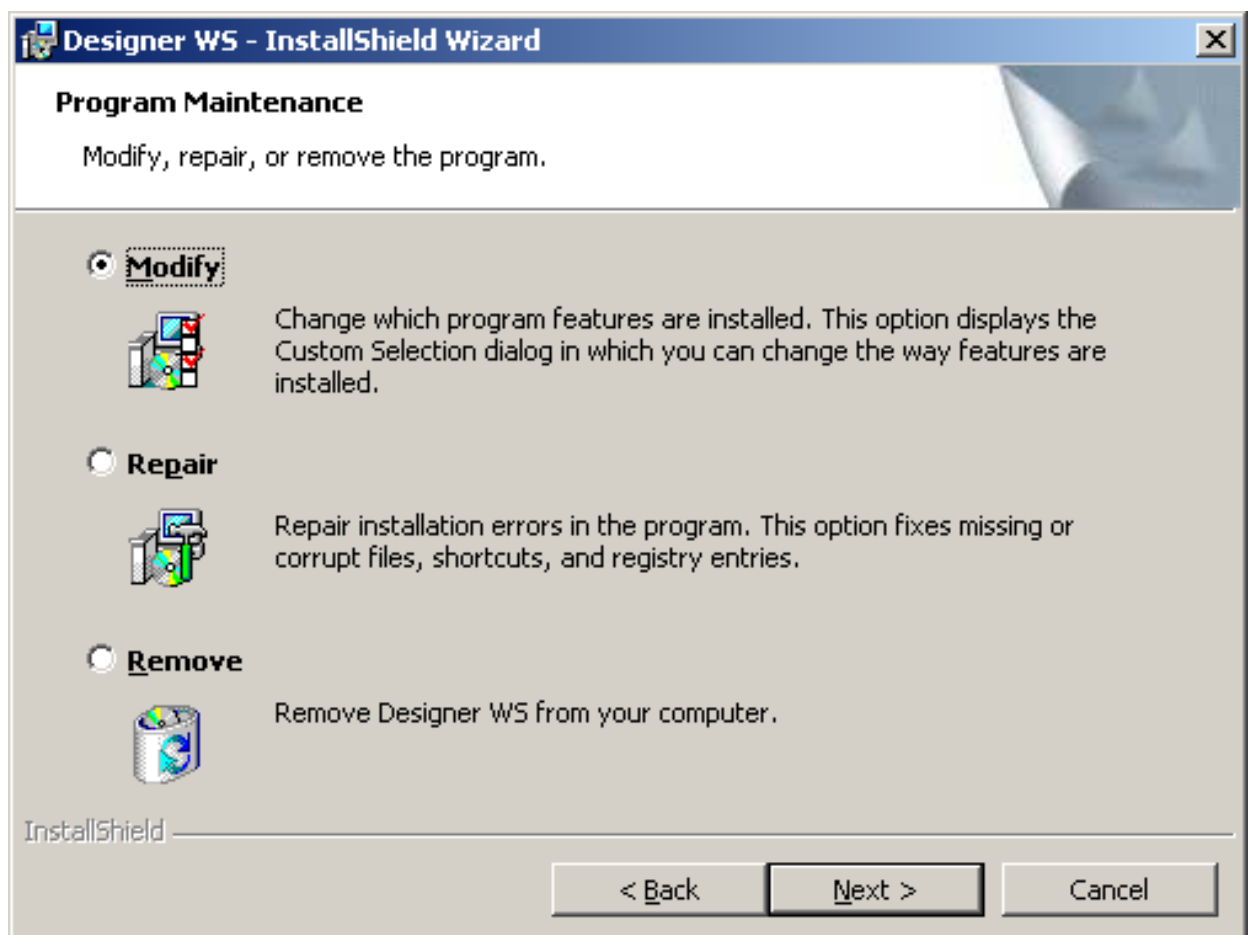
- Modify Designer
- Repair Designer
- Remove Designer

### Modifying Designer

To modify GuiXT Designer after it is installed, please do the following.

**Note:** We recommend that you do not modify any Designer components unless so instructed by a Synactive Support representative.

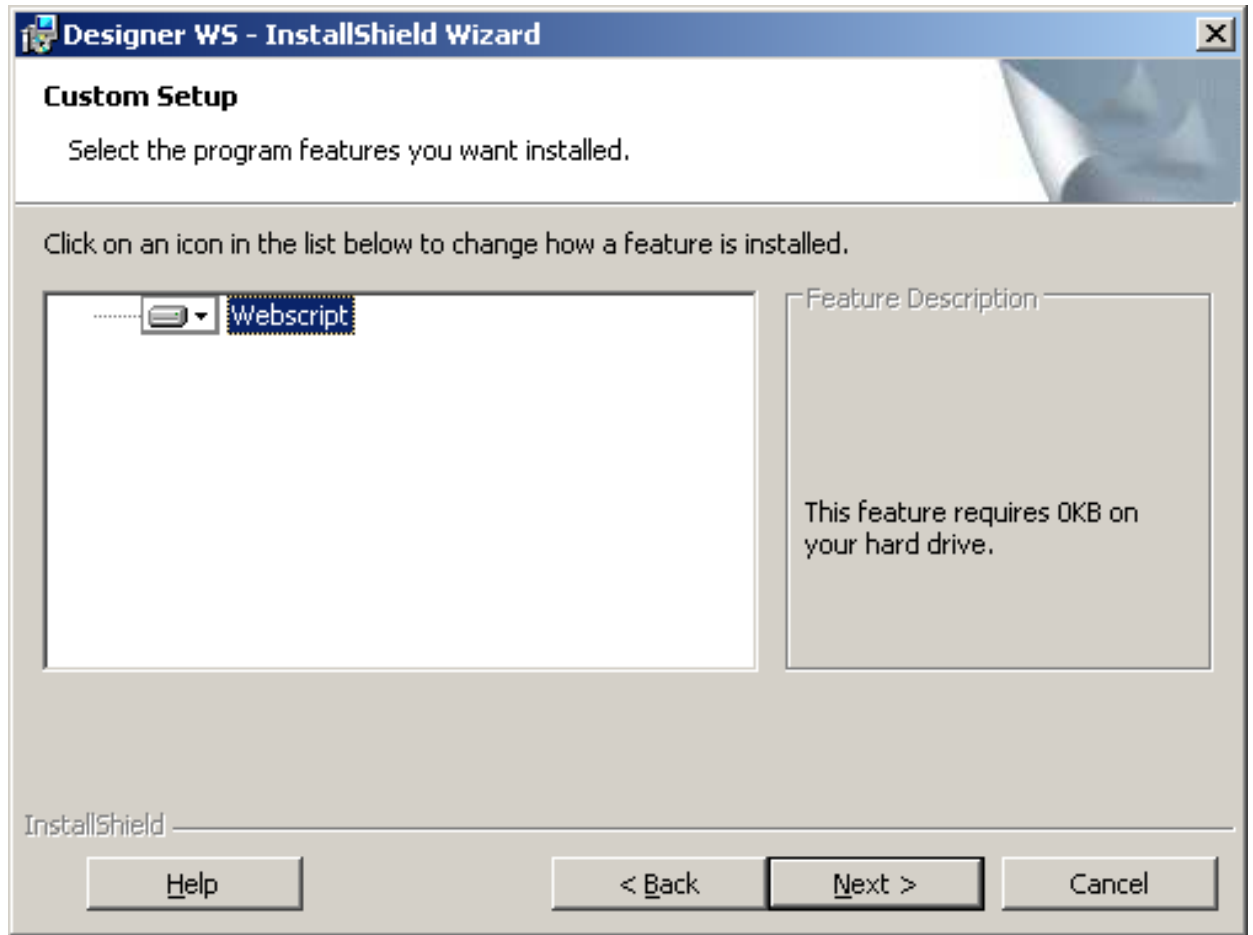
1. Double-click on the Installer. The following screen will appear.



2. Click the Modify radiobutton as shown above.
3. The below screen will display. Choose the 'Webscript' component and then

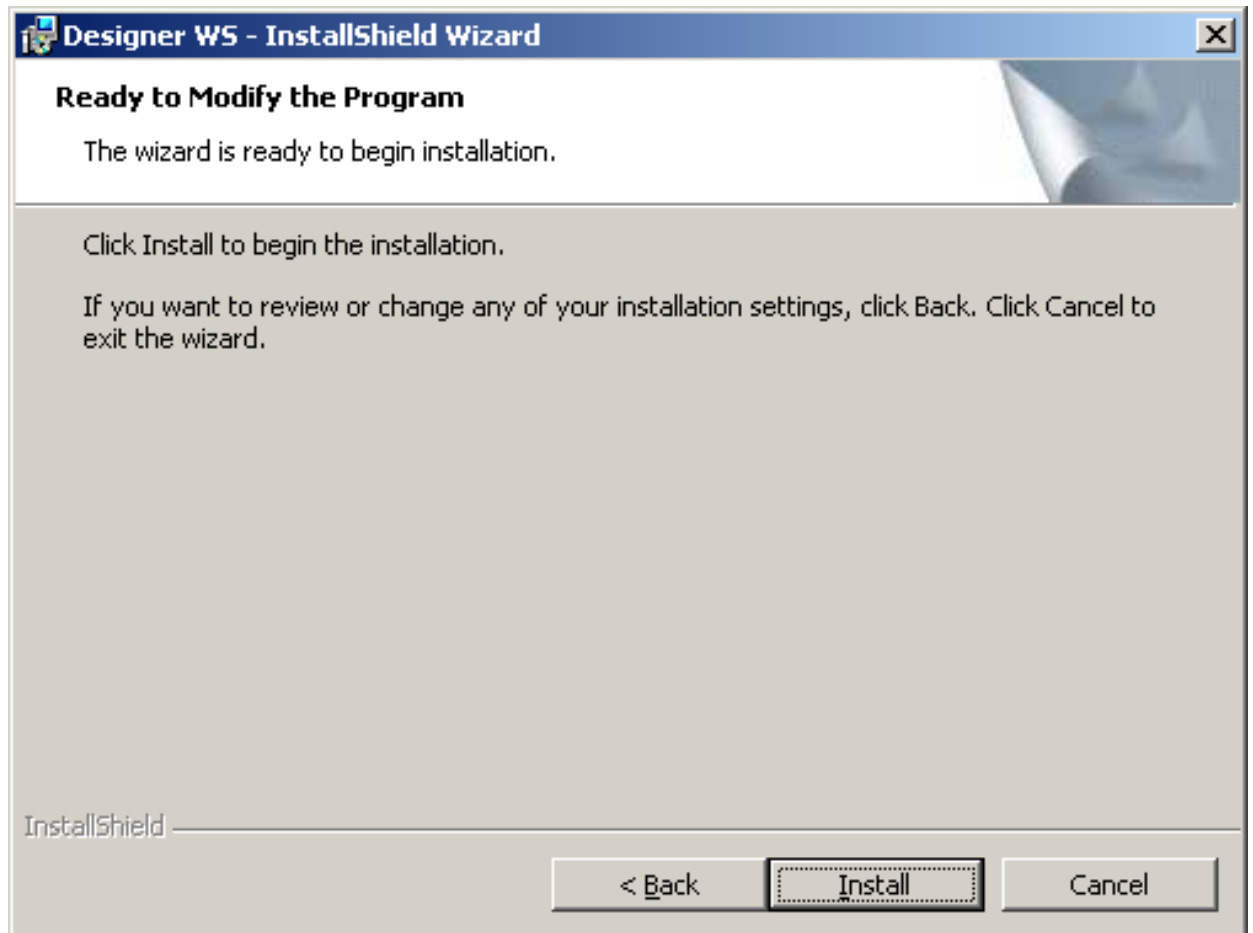
# Designer Installation

click Next.



4. The below screen will display. Click Install to begin modifying Designer's installed components.

# Designer Installation



5. When the modification completes, the Finish screen will display. Designer's components are now modified.

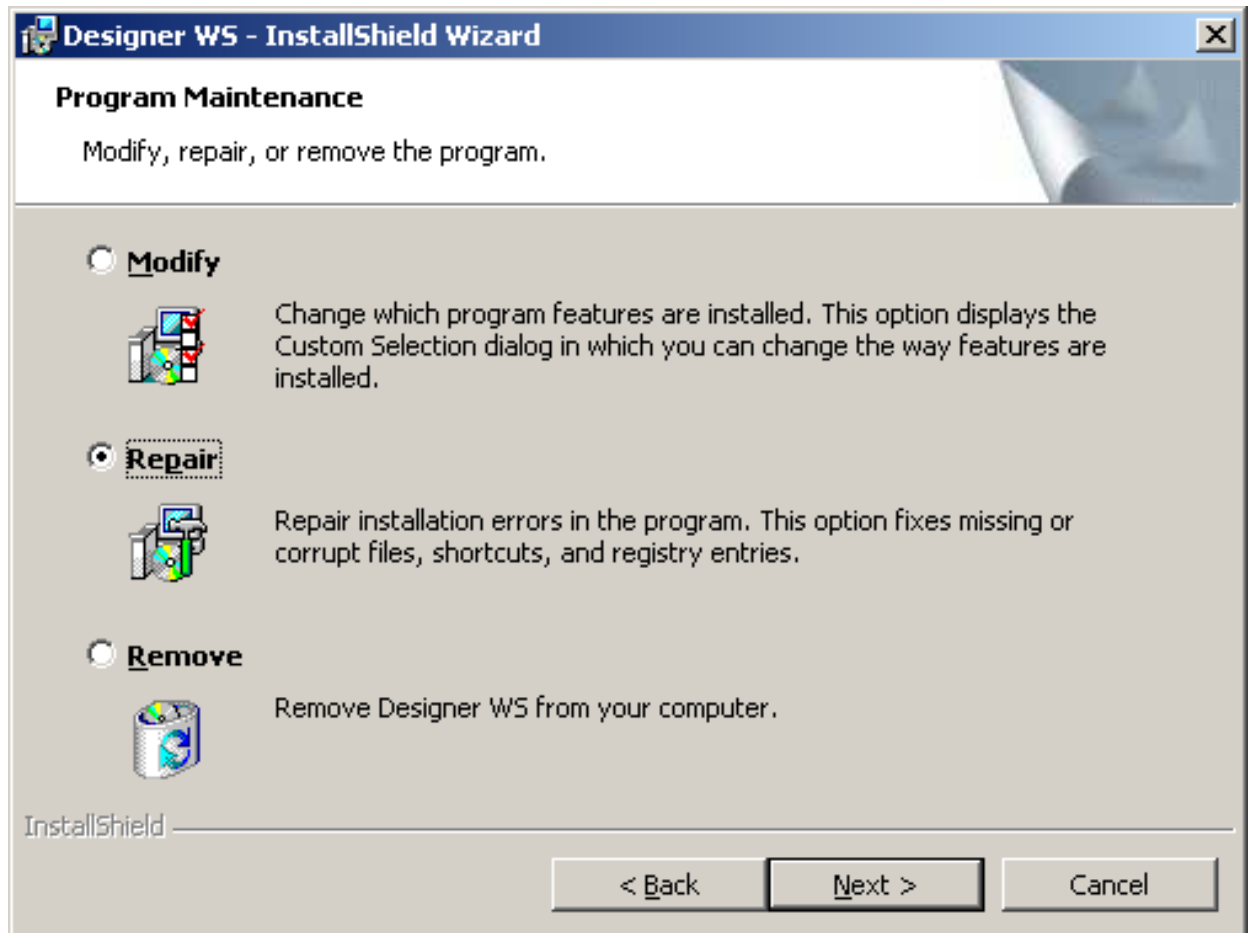
## Repairing Designer

There may be times when Designer or its components become damaged after installation. To repair GuiXT Designer after it is installed, please do the following.

**Note:** We recommend that you do not repair or otherwise modify any Designer components unless so instructed by a Synactive Support representative.

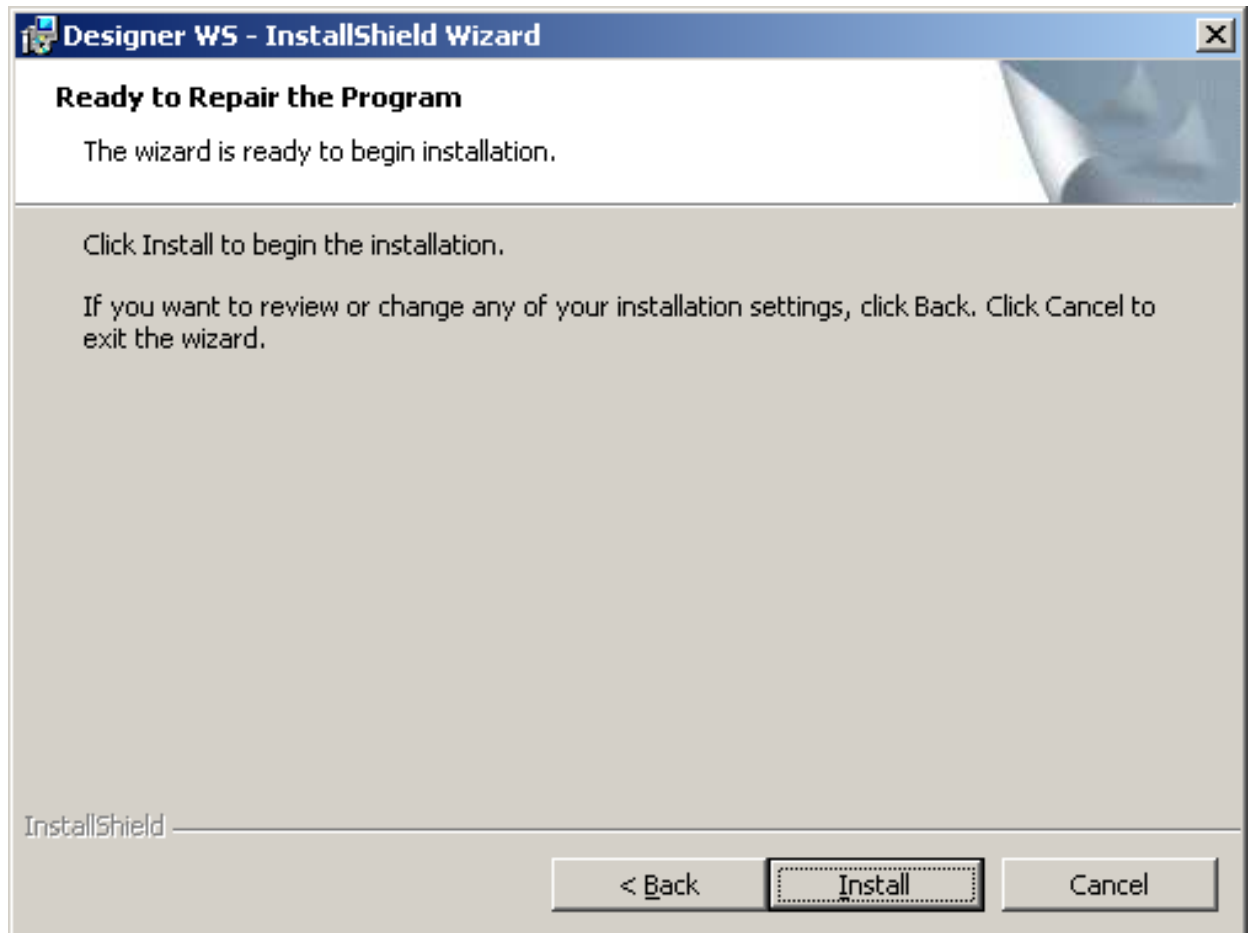
1. Double-click on the Installer. The following screen will appear. Click the Repair radiobutton.

# Designer Installation



2. The following screen will display. Click the Install radio button to begin the repair process.

# Designer Installation



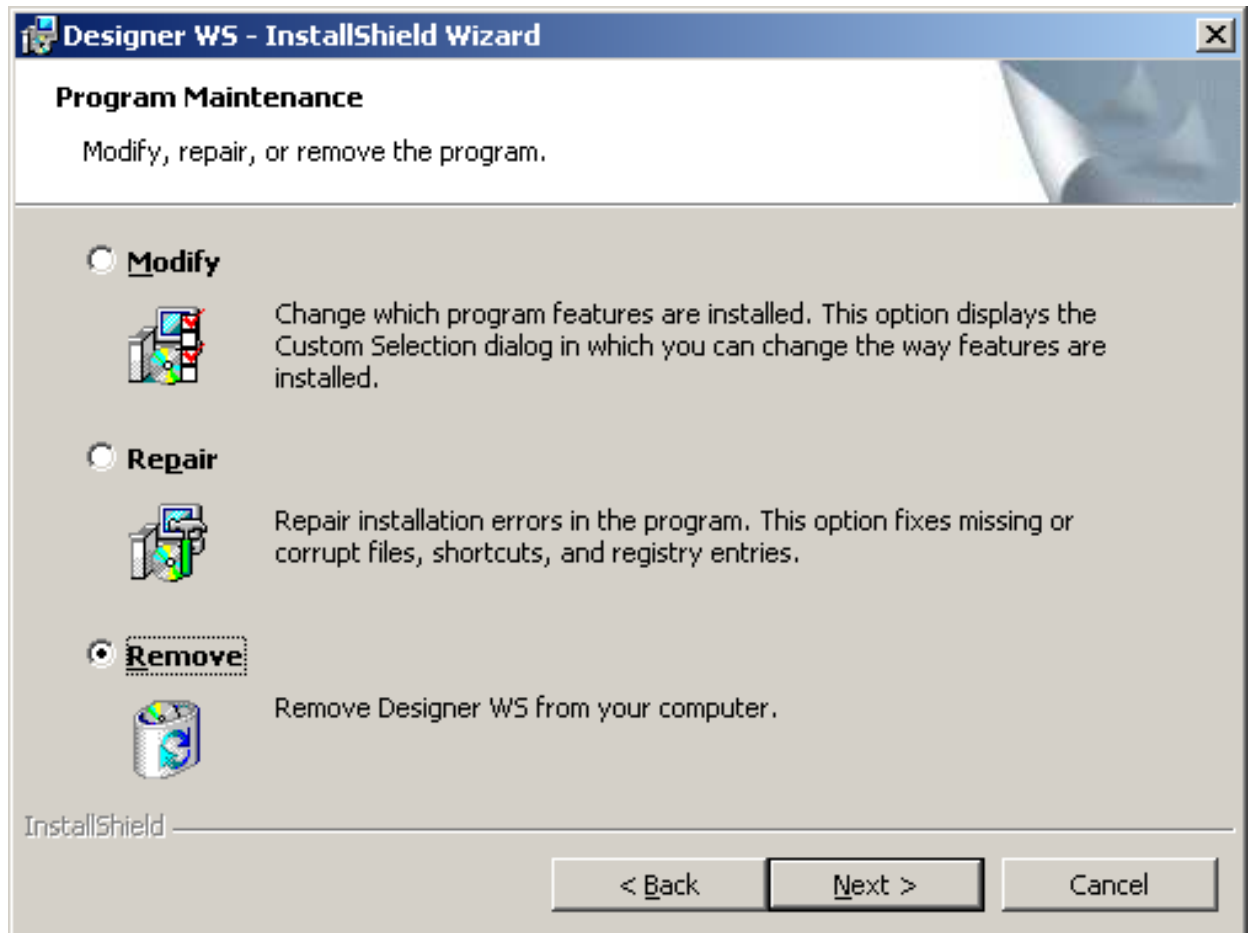
3. When the repair operation is complete, the Finish screen will display. Designer's components are now repaired.

## Removing Designer

To remove GuiXT Designer after it is installed, please do the following.

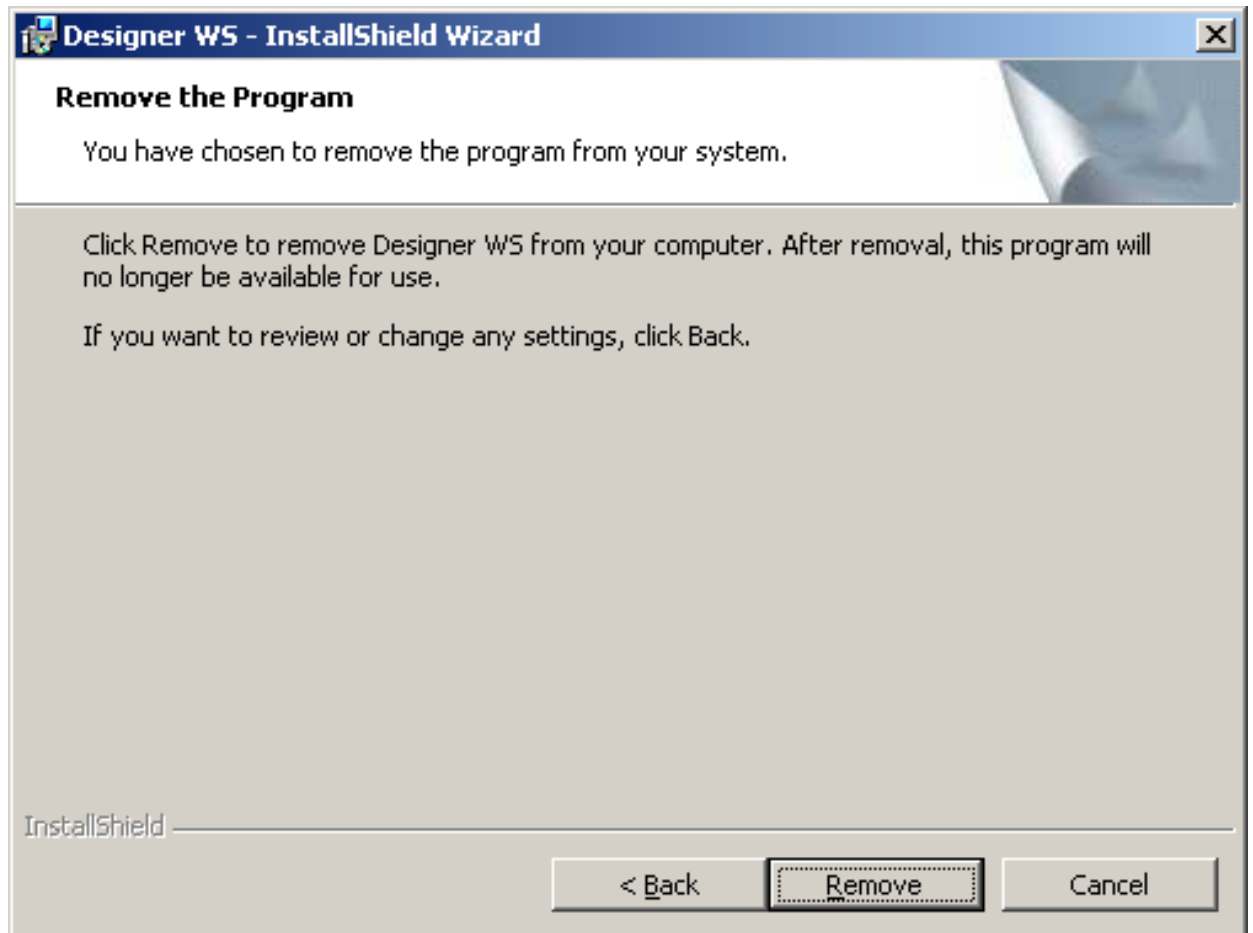
1. Double-click on the Installer. The following screen will appear. Click the Remove radiobutton.

# Designer Installation



2. The following screen will display. Click the Remove button to begin removing Designer from your system.

# Designer Installation



3. When the removal operation is complete, the Finish screen will display. Designer's components are now removed.

Unique solution ID: #1508  
Author: Shilpa Sahu  
Last update: 2019-08-01 07:15