

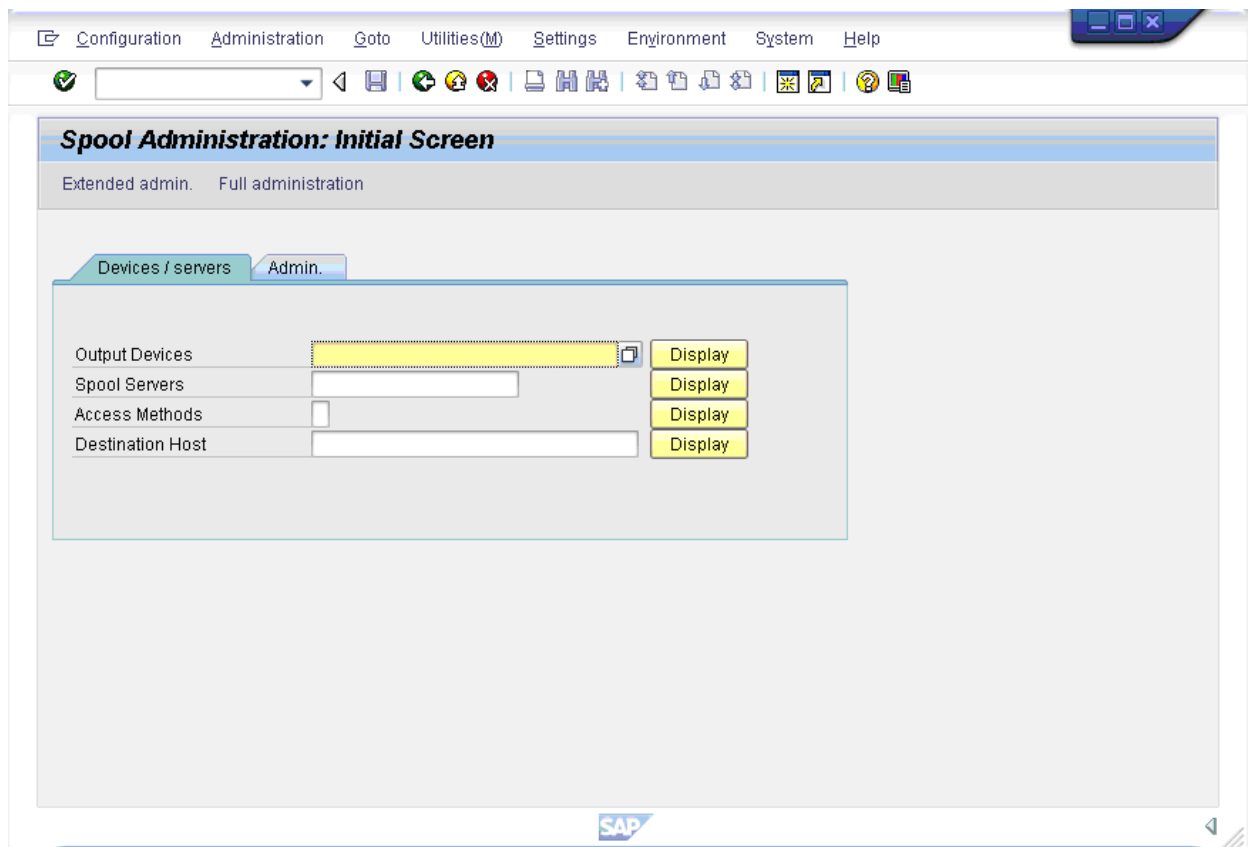
Scanguns Features

4.4.1 SAP Settings for Printing with non-SAPWIN Drivers

SAP Settings for Printing with non-SAPWIN Drivers

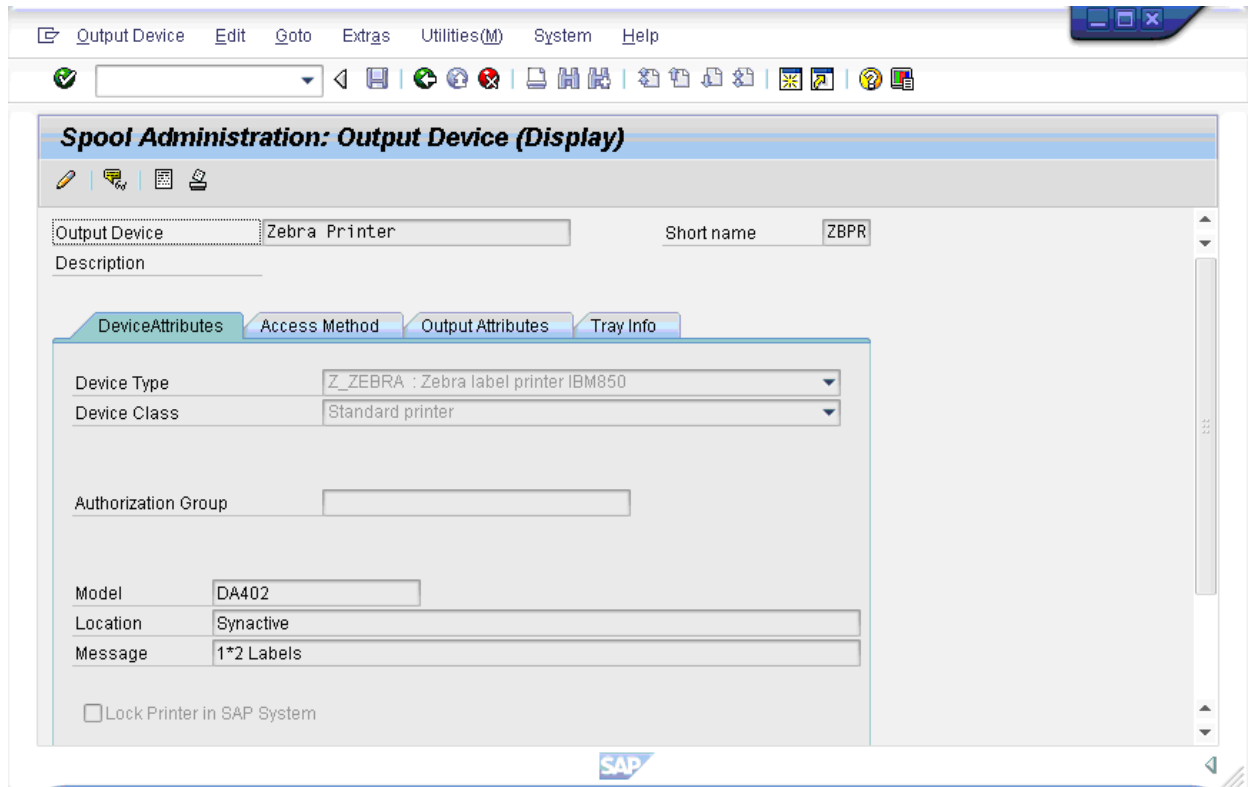
There are a wide range of possible printers to use with a Mobile device. In our example, we are going to set up a Zebra Label printer IBM 850 to use with our device. To enable Mobile printing to this printer using non-SAPWIN drivers, please do the following:

1. Log into SAP.
2. In the Transaction Field, enter the following: /nSPAD.
3. The following screen will appear. Click **Display** button to the right of the Output Devices field.

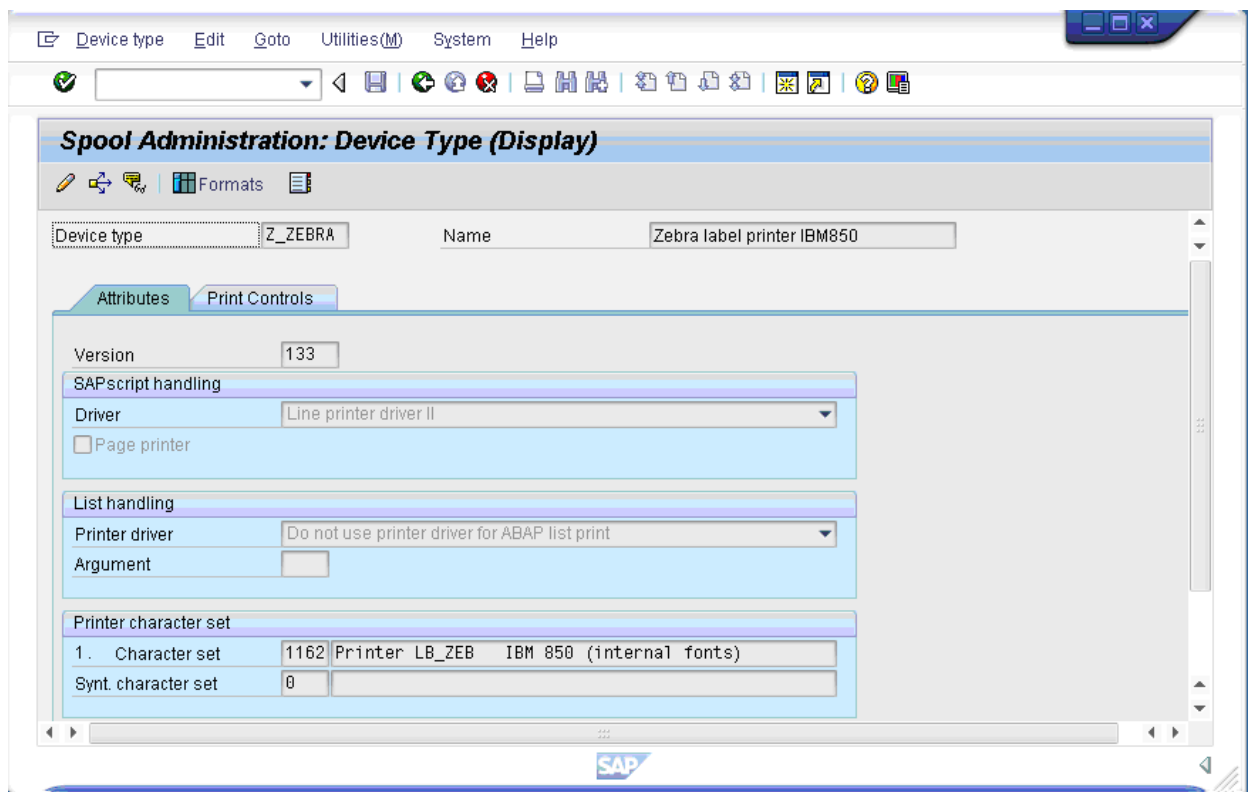


4. The following screen will display. Right-click on **Device Type** field on the screen.

Scanguns Features



5. Right-click on the Device Type field label and select 'Choose' from the resulting list menu. The following screen will appear.



Scanguns Features

6. In the Driver field, select the type of driver for the mode of the printer to be used and then return to the main Output Device screen.

Note: In our example, we are using line printing mode so we selected the 'Line printer driver II' option as shown above.

7. Click the Access Method tab and select the Host Spool Access Method field to display the drop-down menu values.
8. Select G: Printing on Front End Computer with Control Tech from the drop-down list.
9. SAP is now configured to perform printing from Mobile using non-SAPWIN drivers.

Unique solution ID: #1483

Author: Shilpa Sahu

Last update: 2019-06-24 12:42