

Scanguns Configuration

3.1.2.1 Direct Connection to SAP Server

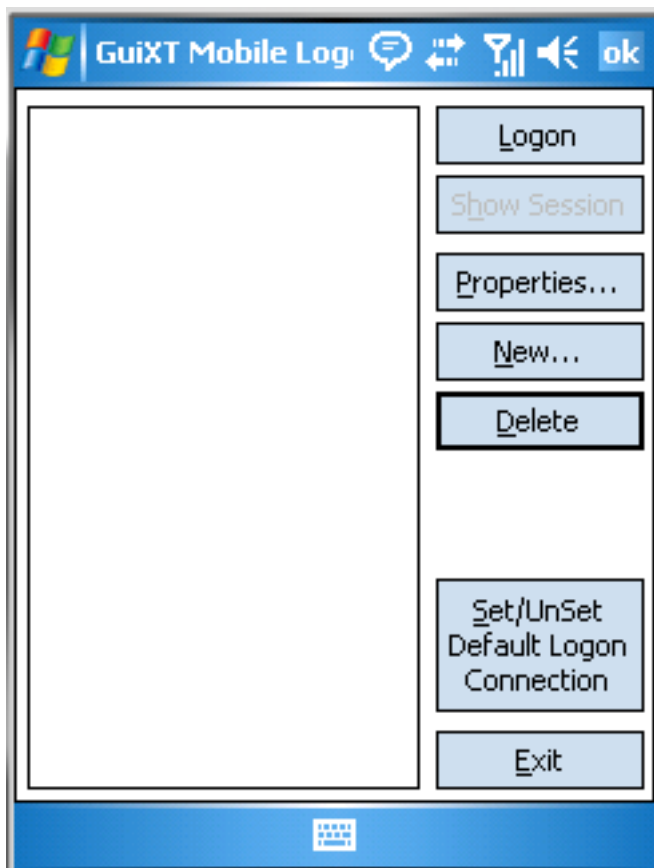
Direct Connections to SAP

In this section, we will explain how to create a new connection directly to a SAP application server. You can create profiles for both direct connections and for server connections. Profiles will be explained in the Profiles section later in this document.

Note: Please note that in order to perform printing functions, Liquid UI for Handheld Scanguns must connect to SAP through a Liquid UI Server.

To create a connection to a SAP application server, please do the following.

1. **Launch** Mobile on your handheld device by double-clicking on the icon.
2. The Logon Pad screen appears as shown below:



3. **Click** the New button.
4. A new window displays as shown below. In the Description field, enter a description of the SAP system. In the Application Server field, enter the name of the SAP application server.

Scanguns Configuration

The screenshot shows a configuration window titled "GuiXT Mobile Log". It has a blue header bar with a Windows logo, the title, and icons for help, settings, signal strength, and volume. The window is divided into two main sections: "General" and "Profile".

The "General" section contains four input fields:

- Description: A text input field.
- Application Server: A text input field.
- SAProuter String: A text input field.
- System Number: A text input field containing the value "0".

The "Profile" section contains:

- A dropdown menu showing "No profile selected" with a downward arrow.
- An "Edit Profile..." button.
- A "Profile Management..." button.

At the bottom of the window are "OK" and "Cancel" buttons.

Enter the following data:

Description

Enter a description of the SAP server. This can be anything.

Application Server

Enter the name or the IP address of the SAP application server.

SAProuter String

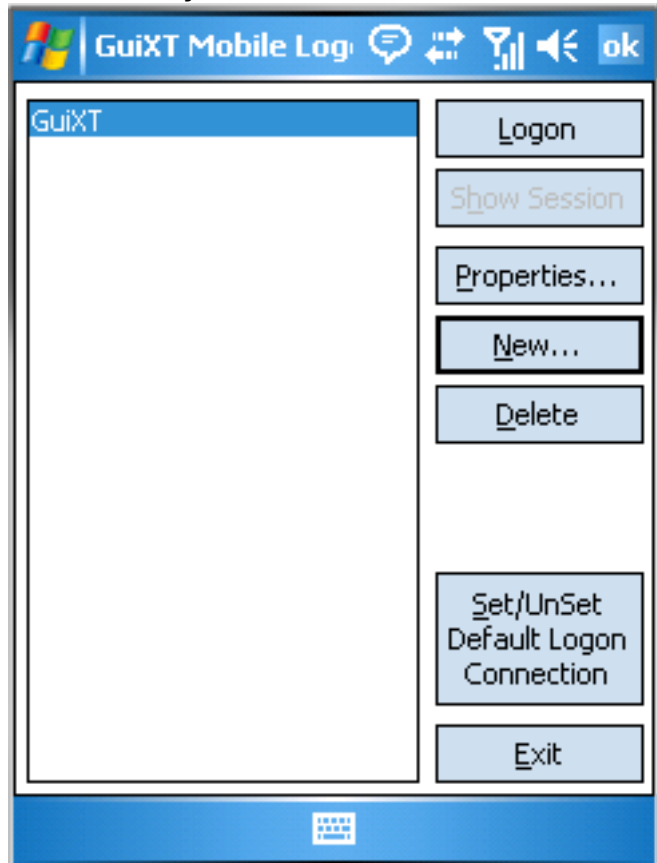
Leave this blank - a SAPRouter connect string would go here if you are using a SAPRouter.

System Number

Enter the system number of the SAP application server.

Scanguns Configuration

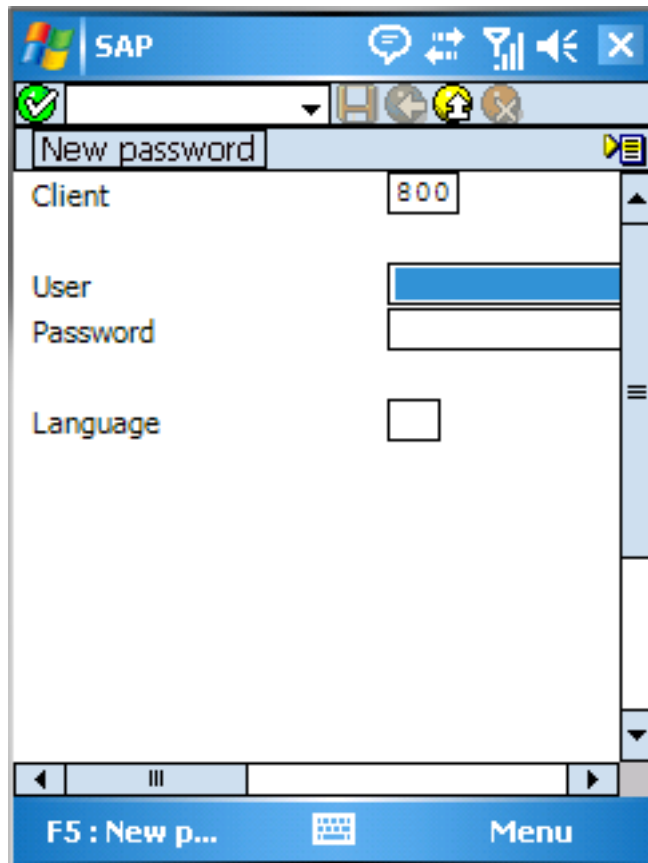
- **Verify** that your information is correct and click OK.
- A new entry will be added as shown in the following example.



Enter the following data:

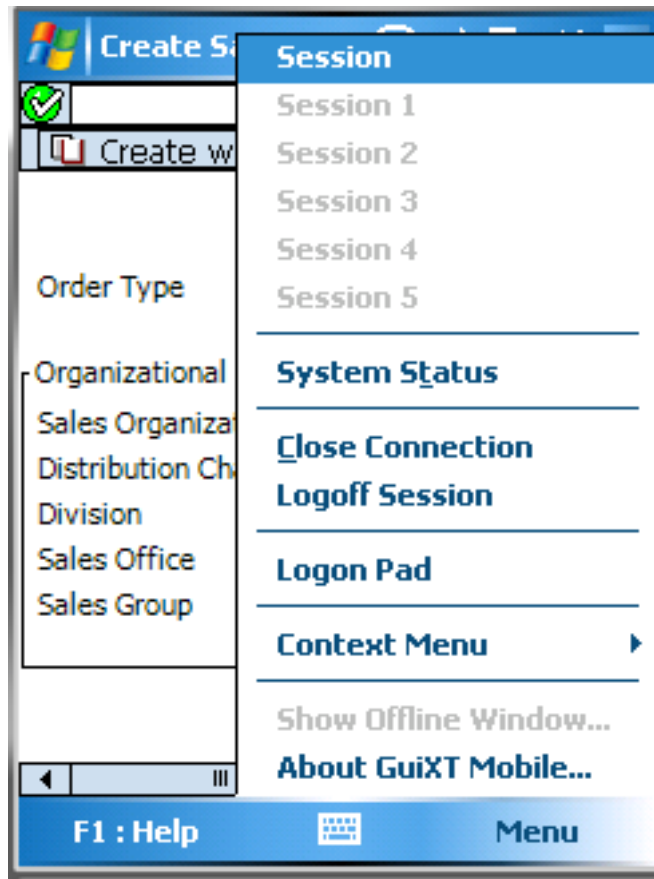
- **Click** on the new connection to highlight it and then click the Logon button. You can also double-click the new connection to launch it.
- The logon screen will display as shown below.

Scanguns Configuration



- **Enter** your logon credentials and then click Enter.
- The SAP Navigation Menu will display.
Note: Your Navigation menu may look different than our example.
- You have now successfully logged into SAP.
- To close the connection, choose the Close Connection option from the Mobile menu as shown below.

Scanguns Configuration



Note: This option will close all open sessions. You can close a single connection by choosing the Logoff Session option. This will close your session, but will not disconnect your device from SAP if additional sessions are open.

Unique solution ID: #1469
Author: Shilpa Sahu
Last update: 2019-06-21 00:54