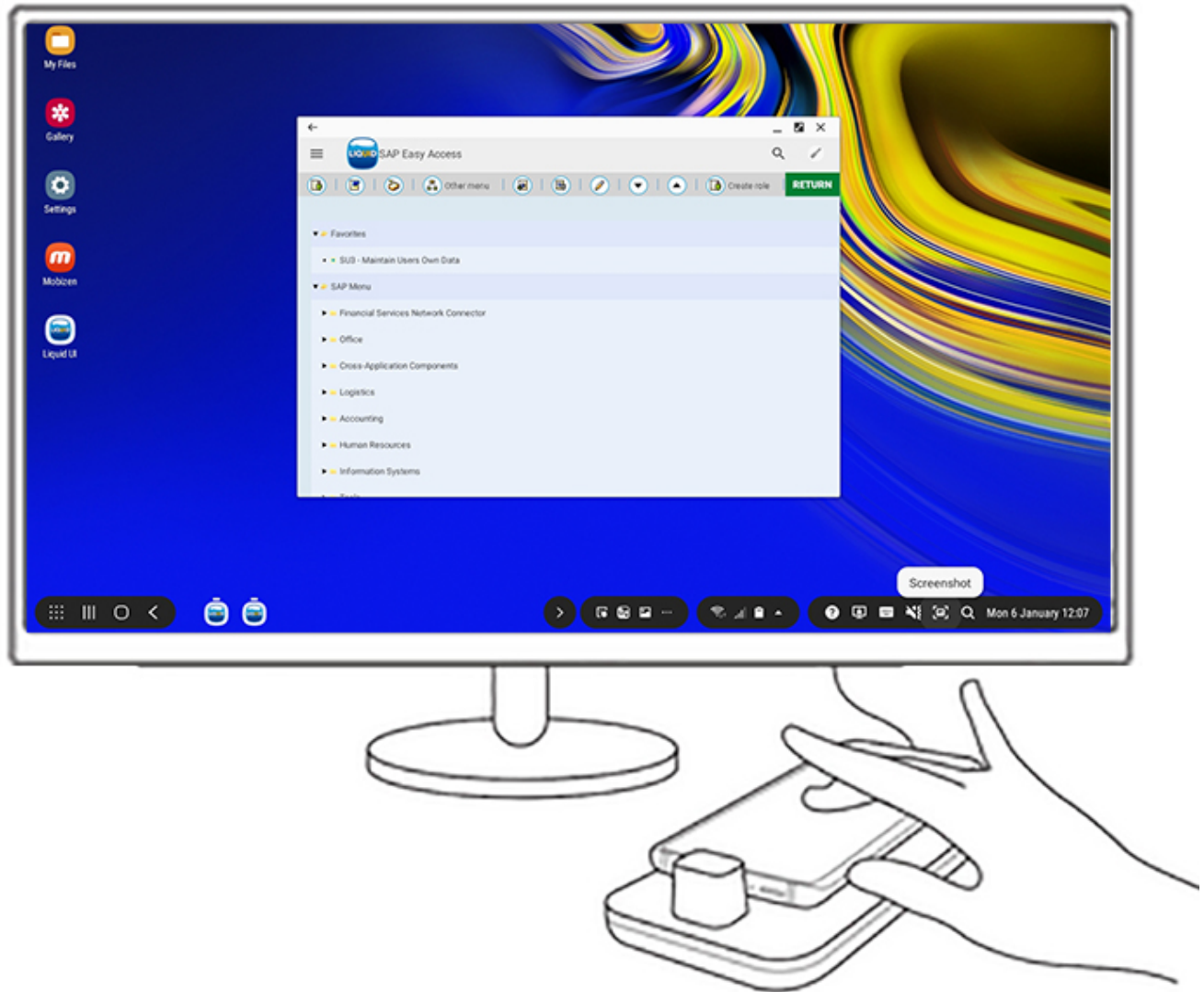


# Android Introduction

## 2.3.17 Liquid UI in Samsung Dex Mode

Liquid UI for Android app is now optimized to work in Samsung Dex mode. In Dex mode, you can connect an external monitor to your Liquid UI for Android devices. Thus, it enables you to work on a larger display for better screen visibility.



### System Requirements

To run your Liquid UI for Android devices in the Samsung DeX mode, the following hardware and software requirements are required.

- **Mobile Device:** Samsung Galaxy S8, S8+, S9, S9+, and Note 8, Note 9, and Tab S4.
- **External Display:** FHD (16:9 ratio) supported, HDMI display (Monitor, TV, Projector).
  - Samsung DeX with SEP v9.0 supports FHD(1920x1080, 16:9), HD+(1600x900, 16:9), and WQHD(2560x1440, 16:9).

# Android Introduction

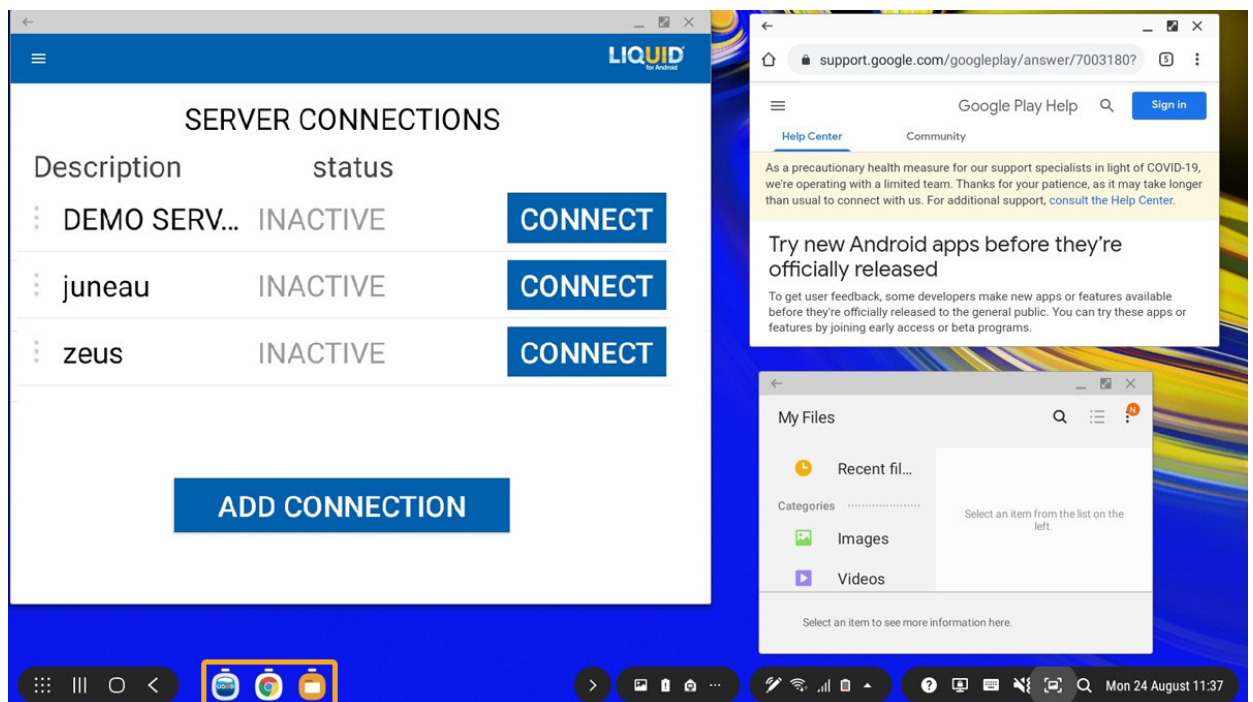
- **Peripherals:** DeX Station or DeX Pad, Samsung branded fast charger, mouse, and keyboard (BT, USB, or RF type).
  - Samsung DeX with SEP v9.0 can be used without a keyboard or mouse connection so users can utilize their phone's touch screen or keyboard.
  - Samsung DeX, with SEP 9.5, now supports the Samsung multi-port adapter or an HDMI adaptor for Note 9 and Tab S4 devices.
- **OS:** Android N onwards (API level 24 or above).

## User Interface

Liquid UI for Android has been optimized with the following features for its best usage in Samsung Dex mode:

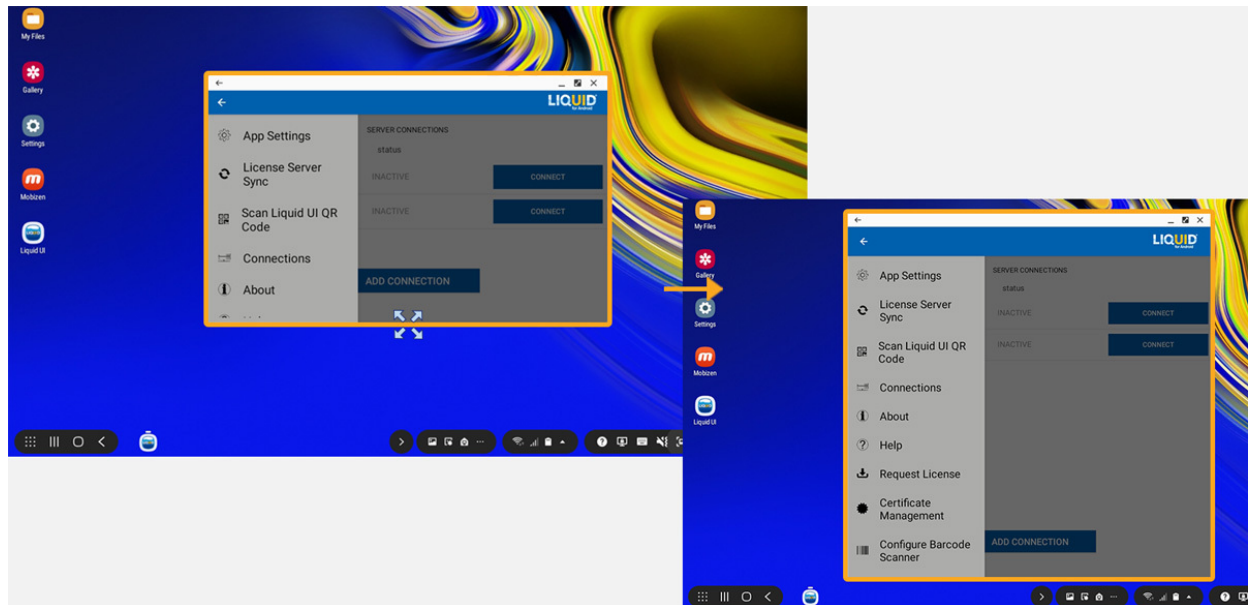
- **Enabling Multi-Window support**

Liquid UI for Android supports the Multi-Window feature to open and work on multiple apps at the same time.



You can find **no change in dpi when the application is resized**. You can resize the window as shown below, to see all the options in the Main Menu on the Server Connection screen.

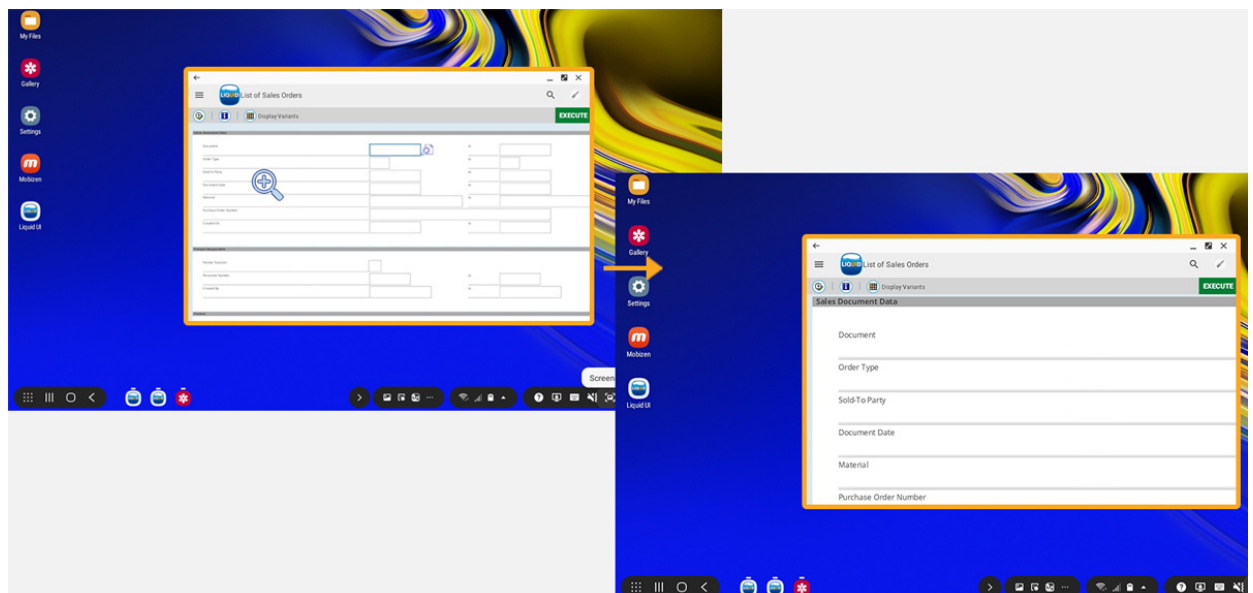
# Android Introduction



- **Enabling keyboard and mouse support**

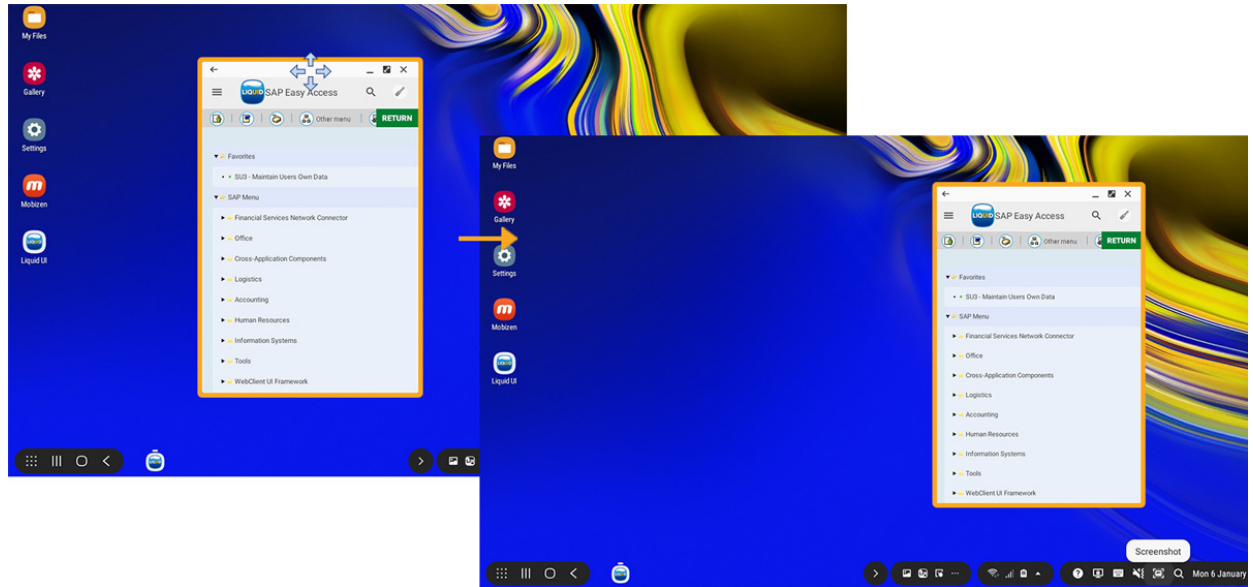
In the Dex mode, your device acts as a touchpad and you can operate with your finger or S Pen to control the DeX environment on the monitor. This feature allows you for easier interaction with the application.

You can zoom in/out of SAP screens in the app as per your requirement.



You can also move the application on the monitor, as shown below.

# Android Introduction



Unique solution ID: #2300

Author: sarvani.kusuri@guixt.com

Last update: 2023-03-17 06:41